

Start
Fundraising
Today!

Schools

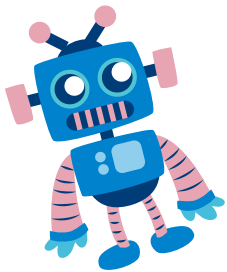
richardhouse.org.uk/schools



**Tell your
school about
Richard House
Children's Hospice**



 **Richard House**
Children's Hospice



Your fundraising could support us to buy...

£150

Entertainment Workshop

This could fund a family entertainer to run a workshop giving the children an amazing fun day to remember.

£500

Lights and Sounds

This could go towards sensory equipment for a child with sensory needs enabling them to communicate through sound.

£700

Out and About

This could go towards a memorable and exciting day out for all the children who couldn't travel otherwise.

£800

Playtime

This could go towards specialist play equipment to help our children have fun as they play and learn.

£1000

Therapeutic Play

This could fund specialist play sessions to help a group of children with life limiting illnesses express how they feel and begin to understand what is happening.

Meet Shaan...

Hi all

I am 14 years old and have been coming to Richard House since I was two years old. I was born with a genetic condition, Cystic fibrosis or CF for short. It means that to stay alive I have to take 50 doses of medicine every day.

Richard House supports us, and many other other children and their families across East London, to lead as positive and happy a life as possible. When we are diagnosed it is difficult for all of us and Richard House has been brilliant supporting my mum and dad as well as me.

Richard House means a lot to me and my family. As a child with a life-limiting illness, I am unable to go out a lot and do things many other children take for granted BUT the world of fun comes to you when you stay at Richard House, which is just amazing.

So thank you for supporting us all.

Shaan



Some ideas to get you started.....



Non-uniform – a classic idea that never goes out of fashion!

You can make the day even more fun by creating a theme like 'sports stars' or a 'superheroes day'. Make sure the teachers get involved too!

5p challenge – a bit of a competition between classes and see who can collect the most 5p coins! Every little really does help at Richard House – 100 x 5p coins will pay for messy play supplies for our children.

Christmas – a great time to fundraise at school and you can incorporate this into an activity you already have in the calendar. Why not ask for donations from pupils, parents and staff at the Christmas concert? £250 could help pay for an activity day to give families a chance to spend time together at the hospice with staff on hand to support them.

Spring time – get the pupils in the kitchen baking and then host your own bakery competition for staff and students. £100 could go towards paying for a therapeutic play session to help a group of children with life limiting illnesses express how they feel.

Summer – use your summer fair to fundraise for Richard House!

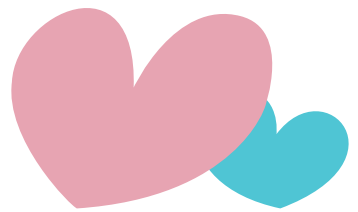
We can provide you with buckets and banners to show your support for us. £800 could go towards specialist play equipment to help our children have fun as they play and learn.



Read on for details of posters, fact sheets, assemblies and much more.....



How to donate to Richard House



Please make **cheques** payable to '**Richard House Trust**' and send to:
Community Fundraising Team
Richard House Children's Hospice
Richard House Drive
London
E16 3RG



Or any funds raised can be **transferred** electronically.
(please contact us for details on how)



Or you can create an **online giving page** where pupils, students and staff can donate directly to – we recommend using Virgin Money Giving.



Or pop in and see us and **bring the money** to the hospice directly.

Downloadable resources

Go to www.richardhouse.org.uk/schools and grab your

- Fundraising guidance for teachers
- Richard House Fact Sheet
- First Give Guidance for students
- Richard House downloadable assembly
- 'We are supporting Richard House' poster



Contact Us

For more information or help with your fundraising you can contact us on **0207 540 0228** or at fundraising@richardhouse.org.uk

